

Case Study

Valentine Court, Lincoln - Student Accommodation

Overview

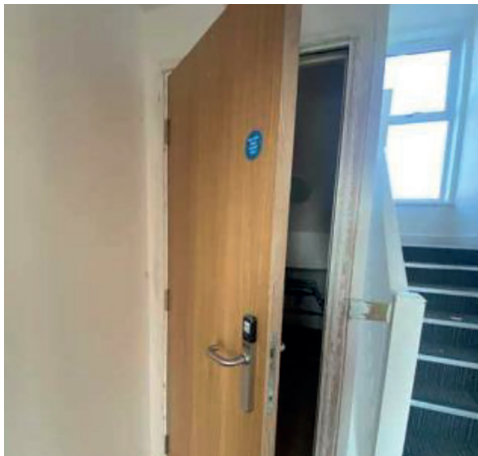
Valentine Way off Tritton Road, Lincoln. As a privately funded developer led project, it is operated directly by the University of Lincoln.



Scope of Work

Fire Industry Specialists were engaged to carry out removal of existing non-compliant foam and install additional fire stopping to door frames post completion after initial student occupation.

Nullifire products were offered to provide a robust and tested detail solution.



Key Points

- Programme managed to work around occupied accommodation.
- Working methods adopted to account for COVID 19 restrictions and safety.
- Strict quality control to ensure a zero defects regime was maintained.
- Works managed to leave a clean and safe environment for re-occupation.