

## Case Study

### Olsen Court, Lincoln - Extra Care Housing

#### Overview

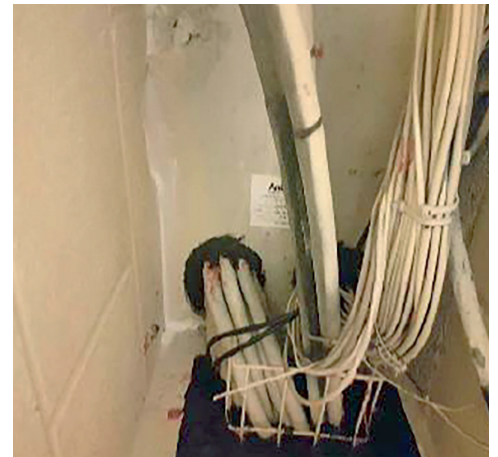
Officially opened in 2006 by HRH the Countess of Wessex, Olsen Court is located within the historic City of Lincoln. A development of specially designed self-contained apartments were built to help retain independent living.



#### Scope of Work

Fire Industry Specialists were engaged to carry out removal of existing non-compliant fire stopping and re-install new fire stopping to ensure legislative compliance. The building

remained in full occupation throughout. The full suite of Rockwool products were utilised to provide a proven system solution.



#### Key Points

- Safe working practice, zero harm tolerance.
- Consideration maintained at all times for residents.
- Working practices adopted to achieve zero impact on residents.
- Close co-ordination and collaboration with the project team to deliver the project safely.